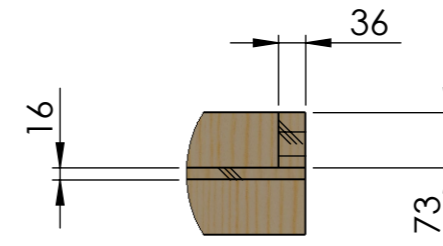
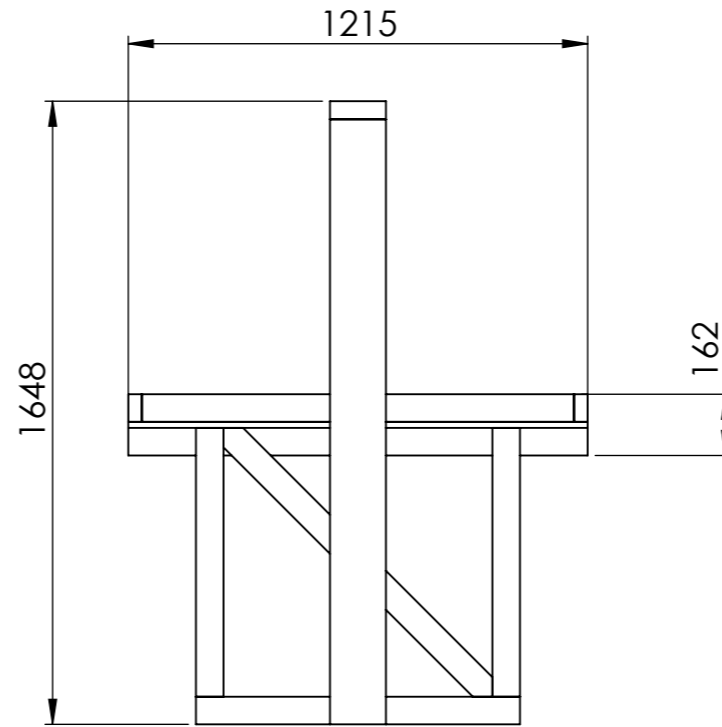
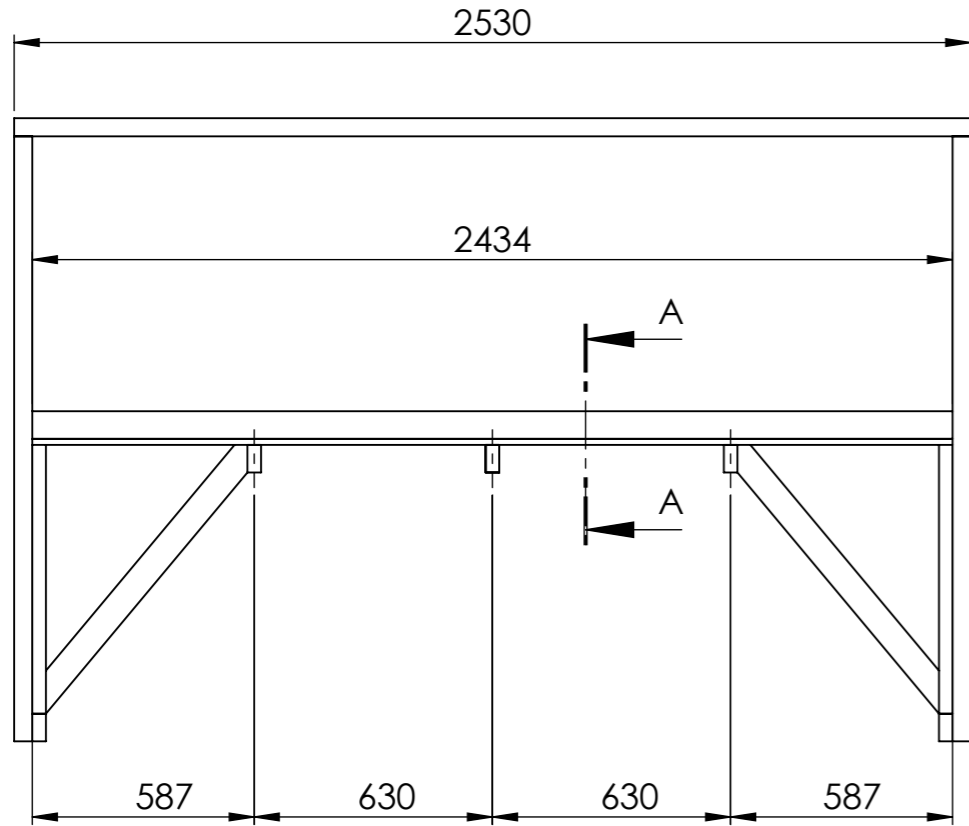
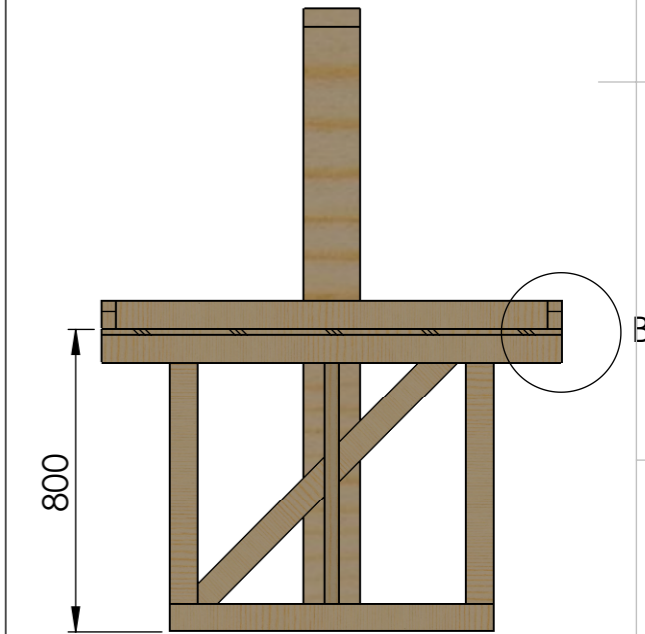
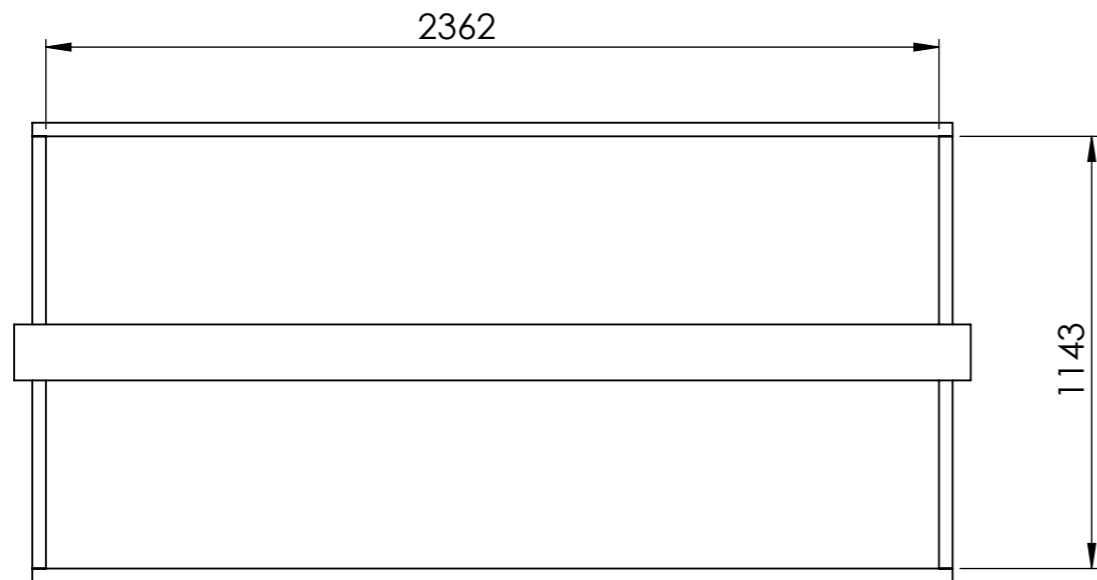
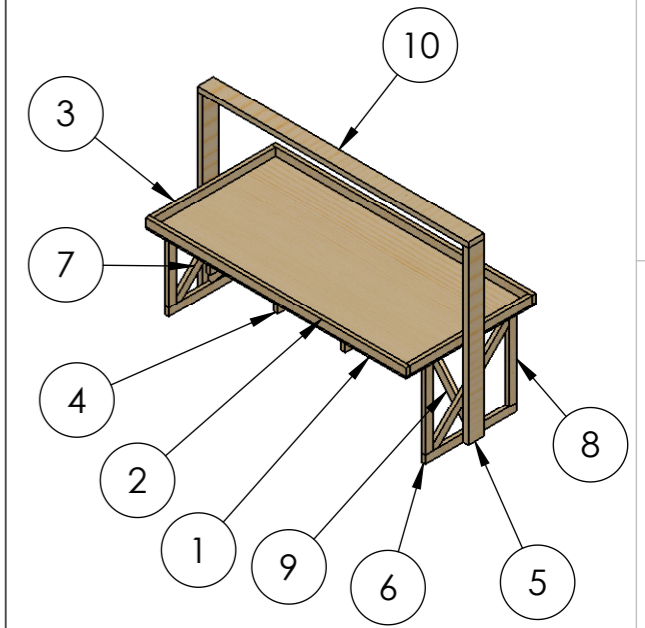


ITEM NO.	PART NUMBER	DESCRIPTION	QTY.	Material	Weight
1	Table surface	Sponplate 12-16mm 1215 x 2434	1	Pine	16.09
2	Long border wall	36x73 x 2434	2	Pine	2.17
3	Short border wall	36x73 x 1143	2	Pine	1.02
4	Stiffener	36x73 x 1215	4	Pine	0.77
5	End column	48x148 x 1600	2	Pine	3.86
6	Horizontal leg	36x73 x 857	2	Pine	0.77
7	Diagonal leg	36x73 x 1006	2	Pine	0.87
8	Vertical leg	36x73 x 711	4	Pine	0.64
9	Inner Diagonal leg	36x73 x 911	2	Pine	0.77
10	Crossover beam	48x148 x 2530	1	Pine	6.11

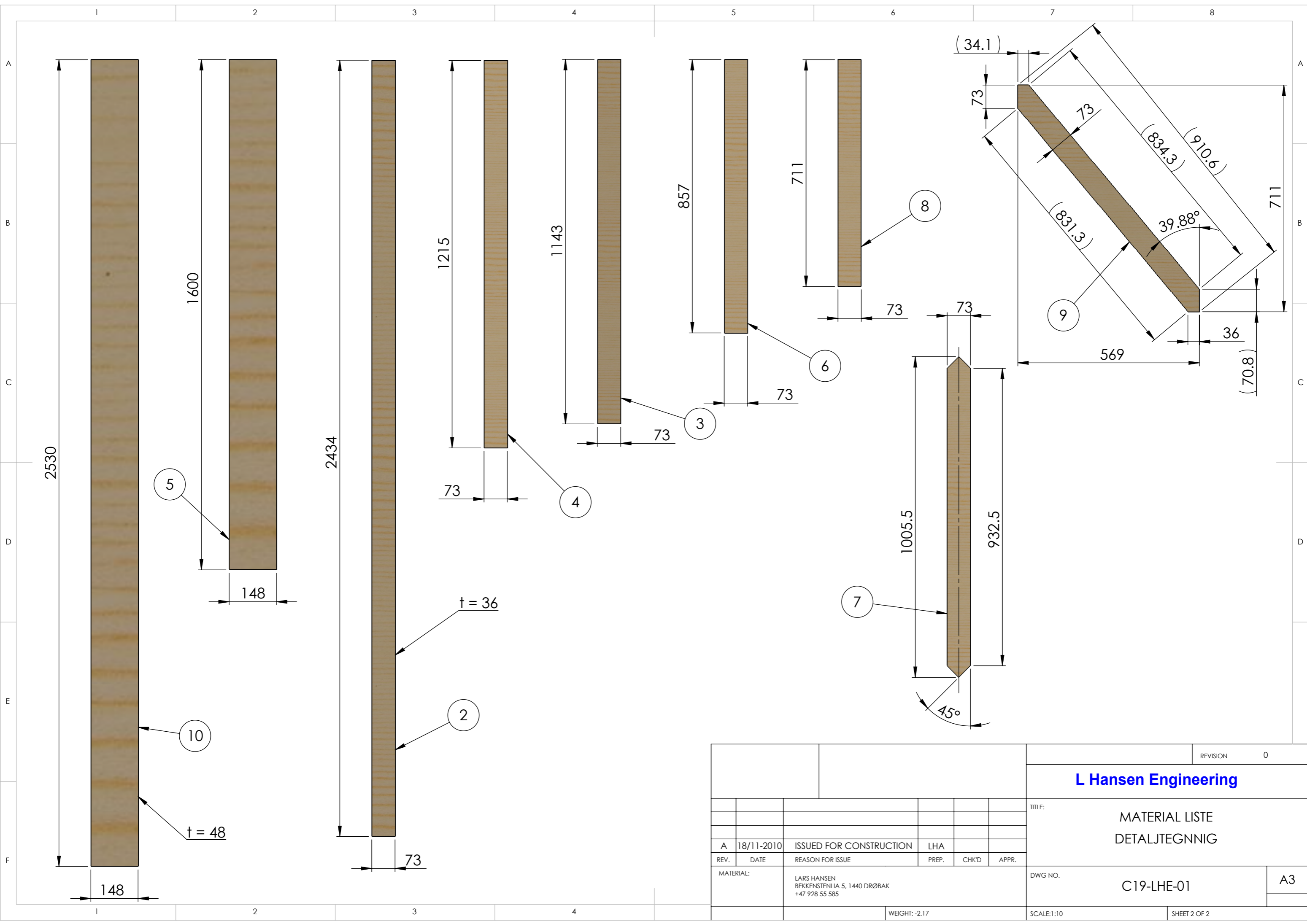


DETAIL B
SCALE 1 : 10



SECTION A-A

TABLE SHOULD BE PAINTED BLACK USE SANDED PLYWOOD FOR PLATE OR PRESSED WALLBOARD NORSK: SPONPLATE ELLER PUSSET KRYSSEFINER I BORDPLATE					REVISION	0
					L Hansen Engineering	
					TITLE: FIRST LEGO LEAGUE TABLE DETAIL DRAWING	
0	18/11-2010	ISSUED FOR CONSTRUCTION	LHA			
REV.	DATE	REASON FOR ISSUE	PREP.	CHK'D	APPR.	
MATERIAL:		LARS HANSEN BEKKENSTENLIA 5, 1440 DRØBAK +47 928 55 585			DWG NO.	C19-LHE-01
						A3
					WEIGHT: 48.02 Kg	SCALE:1:20
					SHEET 1 OF 2	



					REVISION 0	
L Hansen Engineering						
TITLE: MATERIAL LISTE DETALJTEGNIG						
A	18/11-2010	ISSUED FOR CONSTRUCTION	LHA			
REV.	DATE	REASON FOR ISSUE	PREP.	CHK'D	APPR.	
MATERIAL:		LARS HANSEN BEKKENSTENLIA 5, 1440 DRØBAK +47 928 55 585			DWG NO. C19-LHE-01	
				WEIGHT: -2.17		A3
					SCALE:1:10	
					SHEET 2 OF 2	